



BTM SHINGLE



BTM realized the manufacturing of the bituminous waterproofing membranes under the roof of a factory for the first time in 1976 and achieved significant steps in favor of the consumer by eliminating ordinary and primitive methods from the production of this technology demanding product.

BTM enhanced its quality and production capacity thanks to its investments in technology, and produces high quality products in its state-of-the-art facilities and goes after innovations in the technology competition. Continuous control from material input to finished product output is the most important element in achieving excellence.

The quality control in BTM is not limited to raw material control. The products are placed on the market after they undergo a precise control in its laboratories equipped with advanced instruments (accredited by TSE) at every stage of production. The storage conditions in the shipment warehouses are arranged such that the products are best protected until transport stage.

Shingle, an asphalt roof tile, an inclined roof covering material, is a widely used product, whose application increases everyday. The minimum roof inclination recommended for the application of Shingle sheets is 20%.

The production stages of shingle manufactured with a strong fiberglass reinforcement and resistant oxidized body are as follows:

- The mixture prepared using high quality bitumen is directed to production lines after it undergoes quality control.*
- Shingle, having been incorporated with fiberglass reinforcement on production lines, is color granulated on its top surface after necessary thickness is obtained. Furthermore, its subsurface is coated with fine sand. Self-adhesive bitumen is applied on sheet surfaces after application to improve wind and sealing performance.*
- Shingle which has the form of sheet is cut in desired form and fed to the packaging unit to be shipped to consumers.*
- The products are delivered to the shipment warehouse after they undergo quality control and are approved for shipment.*





In Mediterranean region, heavy and brittle roof covers are used as traditional roof covering materials. However, the problems caused by such materials are widely known among public. The asphalt roof tile "shingle" causes none of these problems you suffer. It continues to protect your roof and house as long as the building life thanks to its flexibility. The following aspects clearly present why shingle is the most preferred roof covering material in the world.

• Spectacular outlook, permanent beauty;

Shingle roof covers led to an artistic revolution in roof covering business. Wide range of models and colors helps you realize just what you imagine.

• Economic;

Lightweight, lowers the roof structure costs. It is very easy to solve and apply such details as ridge, gutter, chimney, etc. providing time saving.

• Long life

A roof covered with shingle using correct application fully functions throughout the building life. It enables you to have a problem free roof for many years.

• Extensive field of application;

Wood construction roofs

Steel construction roofs

Inclined concrete roofs

Pergolas

Gazebos

Domes



REVITALISING SOLUTIONS FOR BUILDINGS



BTM Prestige Laminated Shingle Somon

BTM Prestige Laminated Shingle will serve you for many years protecting the roof of your building and you by its two-layer structure and strong reinforcement. It consists of two overlapping layers to re-create the perspective effect, which is a typical feature of traditional roofs.

Perfect color options guarantee your roof to adapt itself to every environment.

None of the problems suffered with traditional roof covering materials will be encountered and your roof will stay maintenance free for many years. Long life, extra strength, originality and magic view of BTM Prestige Laminated Shingle provide your building a value added different outlook.

BTM Prestige Laminated Shingle will be an excellent choice if you wish to create difference in your house. You will increase the value of your house.

BTM Prestige Laminated Shingle;

Lightweight roof covering sheet, avoiding extra loads on your building.

It is flexible by its nature, you can easily use it for all roof details.

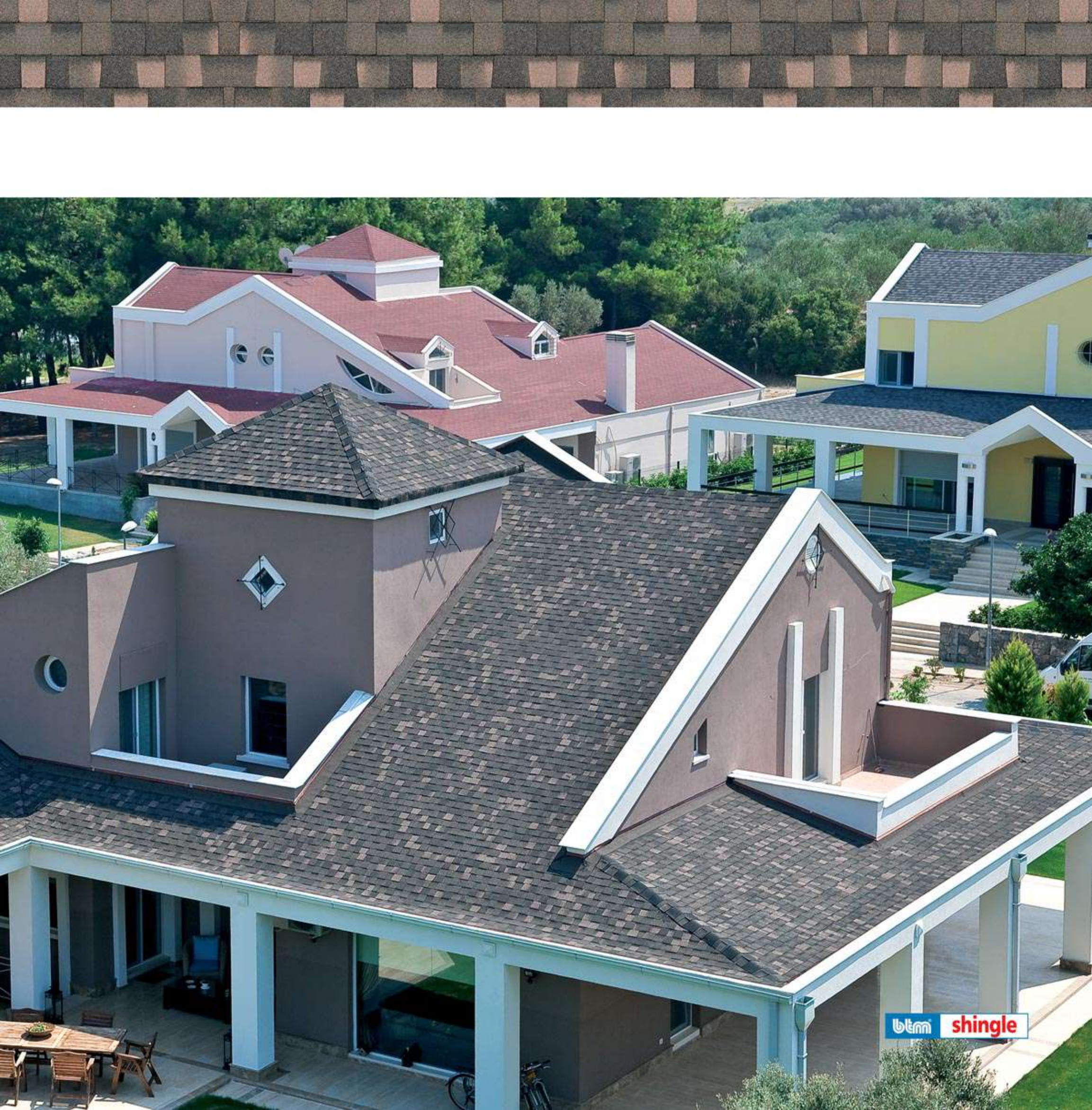
It resists rain, high wind and all climatic conditions for many years.

Yearly maintenance is not required since it is not broken nor carried away.

It is a strong roof covering material thanks to all aforementioned features.

 Conforms European Norms





شنگل shingle



BTM Prestige Laminated Shingle;

*Lightweight roof covering sheet, avoiding extra loads on your building.
It is flexible by its nature, you can easily use it for all roof details.
It resists rain, high wind and all climatic conditions for many years.
Yearly maintenance is not required since it is not broken nor carried away.
It is a strong roof covering material thanks to all aforementioned features.*



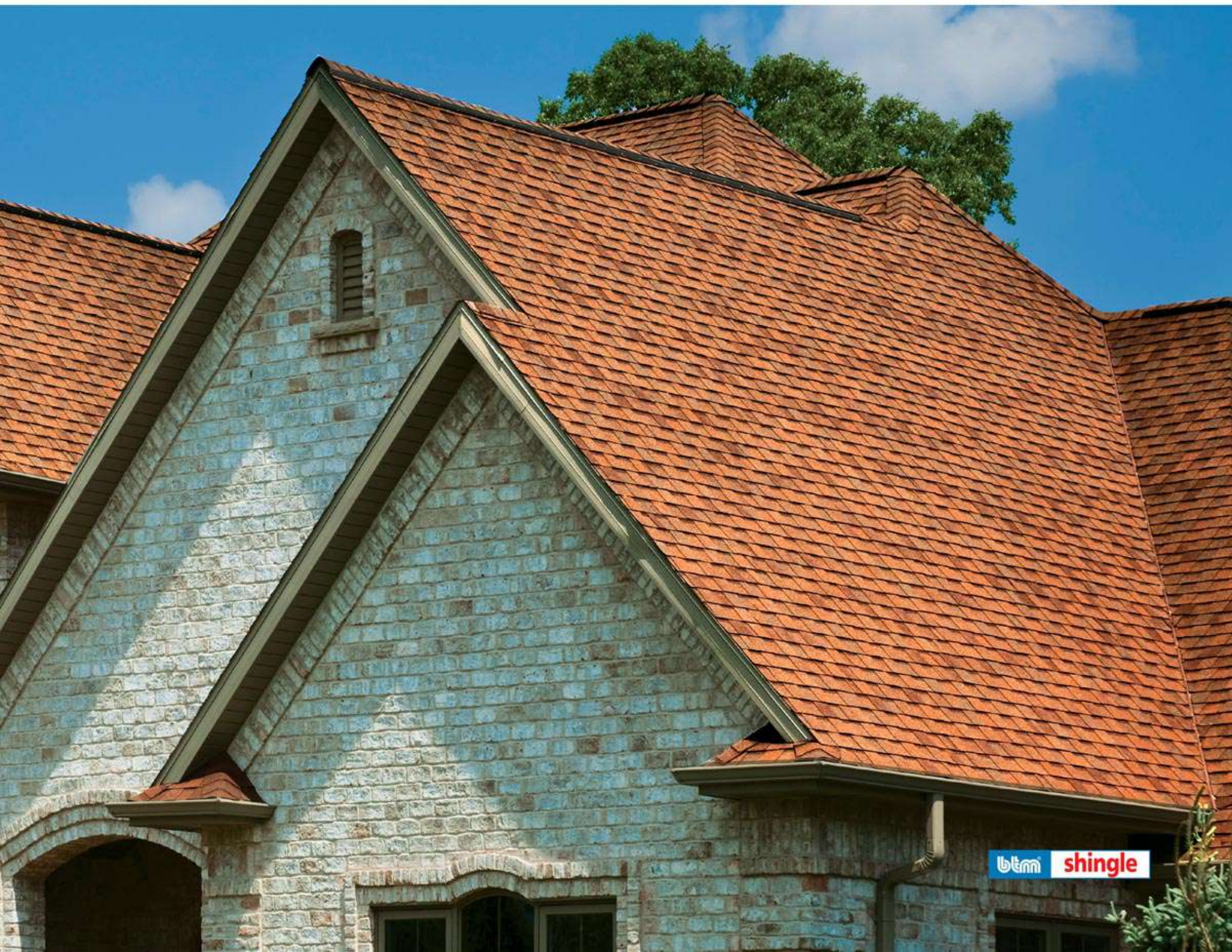
BTM Prestige Laminated Shingle Hardal

BTM Prestige Laminated Shingle will serve you for many years protecting the roof of your building and you by its two-layer structure and strong reinforcement. It consists of two overlapping layers to re-create the perspective effect, which is a typical feature of traditional roofs. Perfect color options guarantee your roof to adapt itself to every environment. None of the problems suffered with traditional roof covering materials will be encountered and your roof will stay maintenance free for many years. Long life, extra strength, originality and magic view of BTM Prestige Laminated Shingle provide your building a value added different outlook. BTM Prestige Laminated Shingle will be an excellent choice if you wish to create difference in your house. You will increase the value of your house.





REVITALISING SOLUTIONS FOR BUILDINGS



btm shingle

BTM Prestige Laminated Shingle Kum Gri

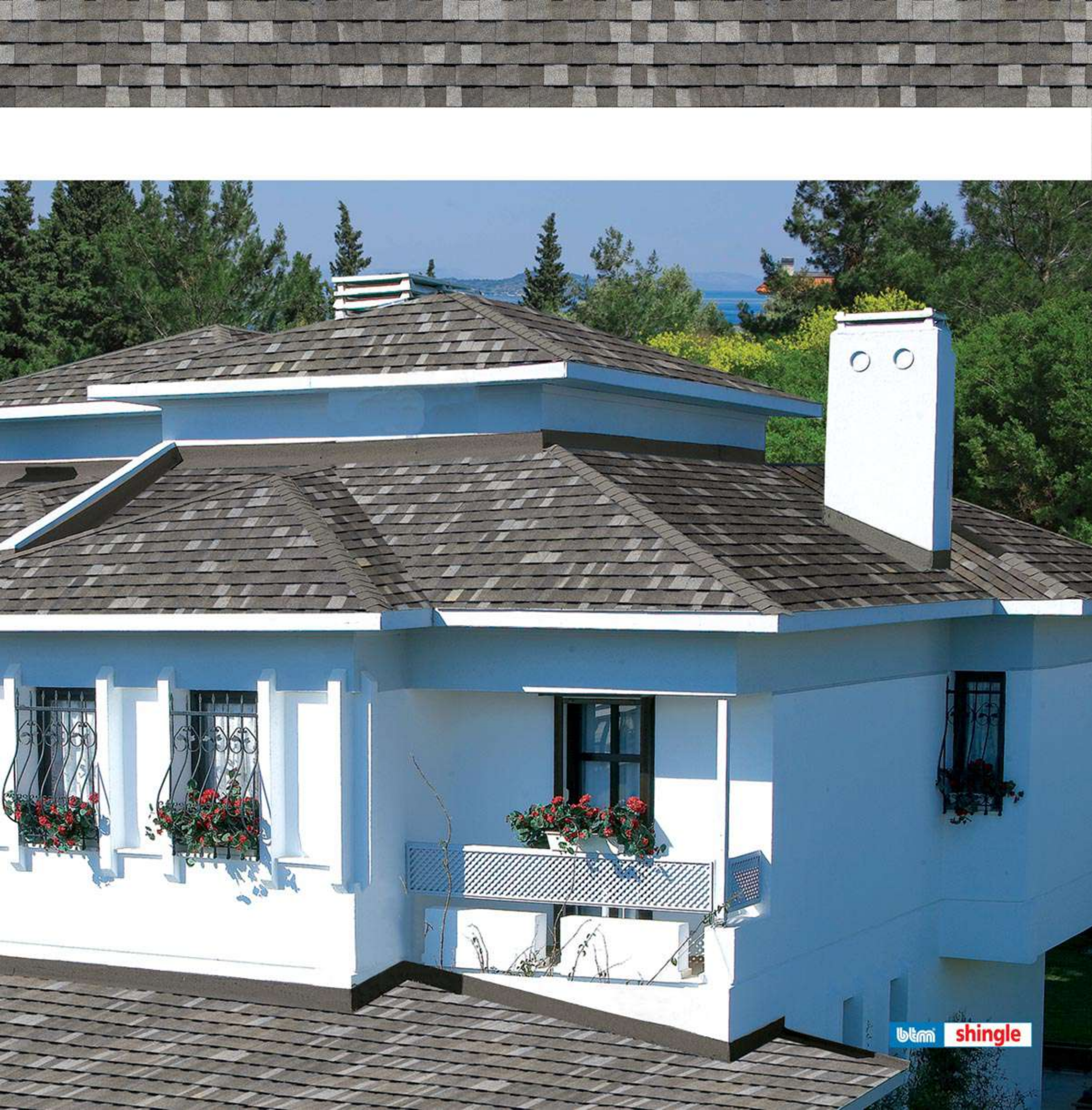
BTM Prestige Laminated Shingle will serve you for many years protecting the roof of your building and you by its two-layer structure and strong reinforcement. It consists of two overlapping layers to re-create the perspective effect, which is a typical feature of traditional roofs. Perfect color options guarantee your roof to adapt itself to every environment. None of the problems suffered with traditional roof covering materials will be encountered and your roof will stay maintenance free for many years. Long life, extra strength, originality and magic view of BTM Prestige Laminated Shingle provide your building a value added different outlook. BTM Prestige Laminated Shingle will be an excellent choice if you wish to create difference in your house. You will increase the value of your house.

BTM Prestige Laminated Shingle;

Lightweight roof covering sheet, avoiding extra loads on your building. It is flexible by its nature, you can easily use it for all roof details. It resists rain, high wind and all climatic conditions for many years. Yearly maintenance is not required since it is not broken nor carried away. It is a strong roof covering material thanks to all aforementioned features.



REVITALISING SOLUTIONS FOR BUILDINGS



BTM Prestige Laminated Shingle Duman

BTM Prestige Laminated Shingle will serve you for many years protecting the roof of your building and you by its two-layer structure and strong reinforcement. It consists of two overlapping layers to re-create the perspective effect, which is a typical feature of traditional roofs.

Perfect color options guarantee your roof to adapt itself to every environment.

None of the problems suffered with traditional roof covering materials will be encountered and your roof will stay maintenance free for many years. Long life, extra strength, originality and magic view of BTM Prestige Laminated Shingle provide your building a value added different outlook. BTM Prestige Laminated Shingle will be an excellent choice if you wish to create difference in your house.

You will increase the value of your house.

BTM Prestige Laminated Shingle;

Lightweight roof covering sheet, avoiding extra loads on your building.

It is flexible by its nature, you can easily use it for all roof details.

It resists rain, high wind and all climatic conditions for many years.

Yearly maintenance is not required since it is not broken nor carried away.

It is a strong roof covering material thanks to all aforementioned features.





REVITALISING SOLUTIONS FOR BUILDINGS

CE Conforms European Norms



REVITALISING SOLUTIONS FOR BUILDINGS





BTM Prestige Laminated Shingle;

*Lightweight roof covering sheet, avoiding extra loads on your building.
It is flexible by its nature, you can easily use it for all roof details.
It resists rain, high wind and all climatic conditions for many years.
Yearly maintenance is not required since it is not broken nor carried away.
It is a strong roof covering material thanks to all aforementioned features.*



 Conforms European Norms

BTM Prestige Laminated Shingle Yeşil

BTM Prestige Laminated Shingle will serve you for many years protecting the roof of your building and you by its two-layer structure and strong reinforcement. It consists of two overlapping layers to re-create the perspective effect, which is a typical feature of traditional roofs.

Perfect color options guarantee your roof to adapt itself to every environment. None of the problems suffered with traditional roof covering materials will be encountered and your roof will stay maintenance free for many years. Long life, extra strength, originality and magic view of BTM Prestige Laminated Shingle provide your building a value added different outlook. BTM Prestige Laminated Shingle will be an excellent choice if you wish to create difference in your house.

You will increase the value of your house.



 **shingle**



REVITALISING SOLUTIONS FOR BUILDINGS





BTM Prestige Laminated Shingle Kirmizi

BTM Prestige Laminated Shingle will serve you for many years protecting the roof of your building and you by its two-layer structure and strong reinforcement. It consists of two overlapping layers to re-create the perspective effect, which is a typical feature of traditional roofs.

Perfect color options guarantee your roof to adapt itself to every environment. None of the problems suffered with traditional roof covering materials will be encountered and your roof will stay maintenance free for many years. Long life, extra strength, originality and magic view of BTM Prestige Laminated Shingle provide your building a value added different outlook. BTM Prestige Laminated Shingle will be an excellent choice if you wish to create difference in your house.

You will increase the value of your house.

BTM Prestige Laminated Shingle;

*Lightweight roof covering sheet, avoiding extra loads on your building.
It is flexible by its nature, you can easily use it for all roof details.
It resists rain, high wind and all climatic conditions for many years.
Yearly maintenance is not required since it is not broken nor carried away.
It is a strong roof covering material thanks to all aforementioned features.*



CE Conforms European Norms



btm shingle



anatomic structure of quality



BTM Prestige Laminated Shingle Upper layer

- 1- Natural, color granulated surface, protecting against external effects
- 2- Superior performance oxidized bitumen
- 3- High quality fiberglass reinforcement

BTM Prestige Laminated Shingle Lower layer

- 1- Natural, color granulated surface, protecting against external effects
- 2- Superior performance oxidized bitumen
- 3- High quality fiberglass reinforcement
- 4- Protective sand layer

Natural colors in harmony with the environment



BTM Prestige Laminated Shingle Hardal



BTM Prestige Laminated Shingle Somon FÜme



BTM Prestige Laminated Shingle Duman



BTM Prestige Laminated Shingle Kum Gri



BTM Prestige Laminated Shingle Yeşil



BTM Prestige Laminated Shingle Kırmızı

Please ask to see a product sample before making the final decision on your color and model selection. Screen view and catalog print images may differ from the actual product for technical reasons. For this reason, BTM cannot be held responsible for differences such as color, shade and texture.

REVITALISING SOLUTIONS FOR BUILDINGS



BTM Shingle Yakut

*Lightweight roof covering sheets,
not causing extra load to your building.*

*Flexible by its nature, easy to use
in all roof details.*

*Resists rain, high wind and all climatic conditions
for many years.*

*Yearly maintenance is not required since
it is not broken nor carried away.*

*It is a strong roof covering material thanks to all
aforementioned features.*

btm shingle

CE Conforms European Norms





BTM Shingle Yakut

BTM Shingle Yakut reflects naturalness to your roof by its pattern and model. It is resistant to fracture, degradation and deformation. BTM Shingle Yakut, integrating with your roof design by its geometrical form, provides easy application thanks to its self-adhesive subsurface.



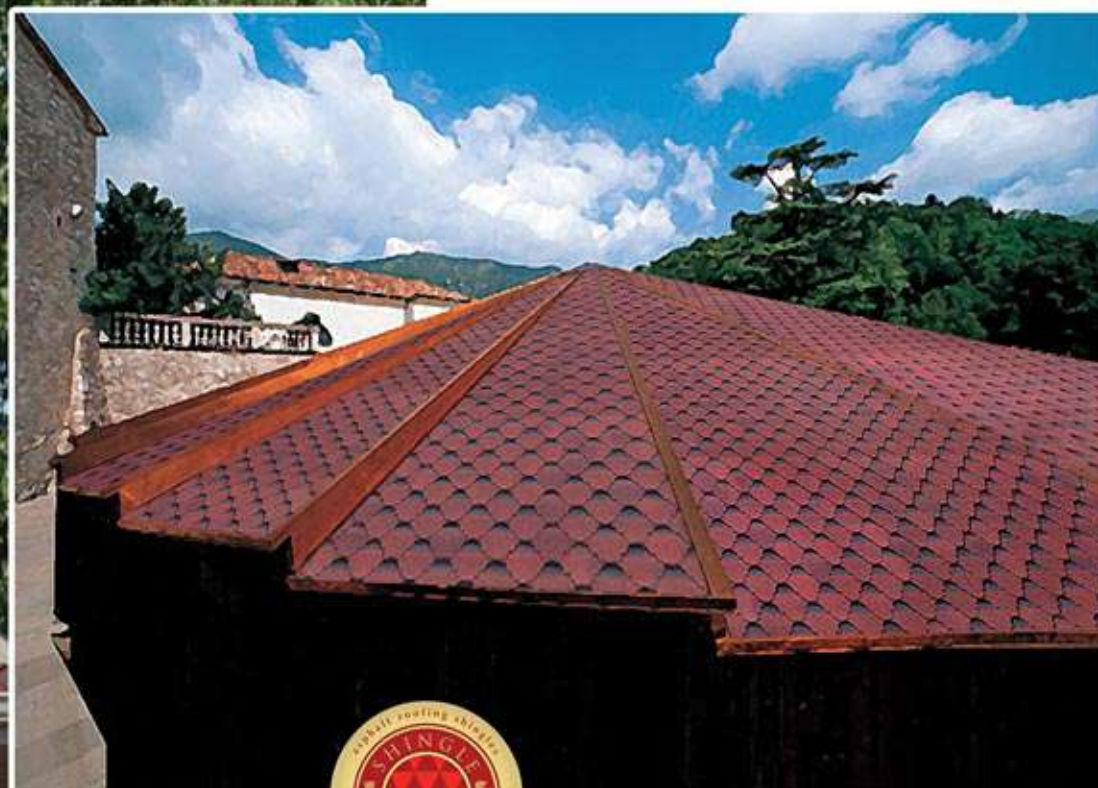
BTM Shingle Rustik

BTM Shingle Rustik, distinguished by its curved form from other shingle products, adds a different ambiance to your roof design.

BTM Shingle Rustik creates a new outlook on your roofs with its oriental form, curved pattern and different color alternatives for those who are looking for roofs different from others. It provides easy application thanks to its self-adhesive subsurface.



REVITALISING SOLUTIONS FOR BUILDINGS



BTM Shingle Rustik

*Lightweight roof covering sheets,
not causing extra load to your building.*

*Flexible by its nature, easy to use
in all roof details.*

*Resists rain, high wind and all climatic conditions
for many years.*

*Yearly maintenance is not required since
it is not broken nor carried away.*

*It is a strong roof covering material thanks to all
aforementioned features.*

btm shingle

CE Conforms European Norms



anatomic structure of quality



BTM Shingle Rustik layers

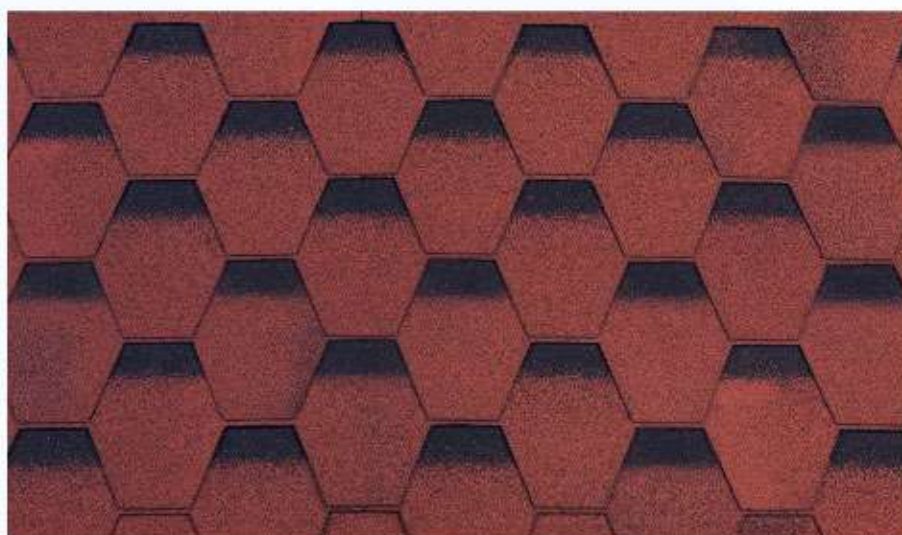
- 1- Natural, color granulated surface, protecting against external effects
- 2- Superior performance oxidized bitumen
- 3- High quality fiberglass reinforcement
- 4- Protective sand layer
- 5- Plastic film protecting the self-adhesive part



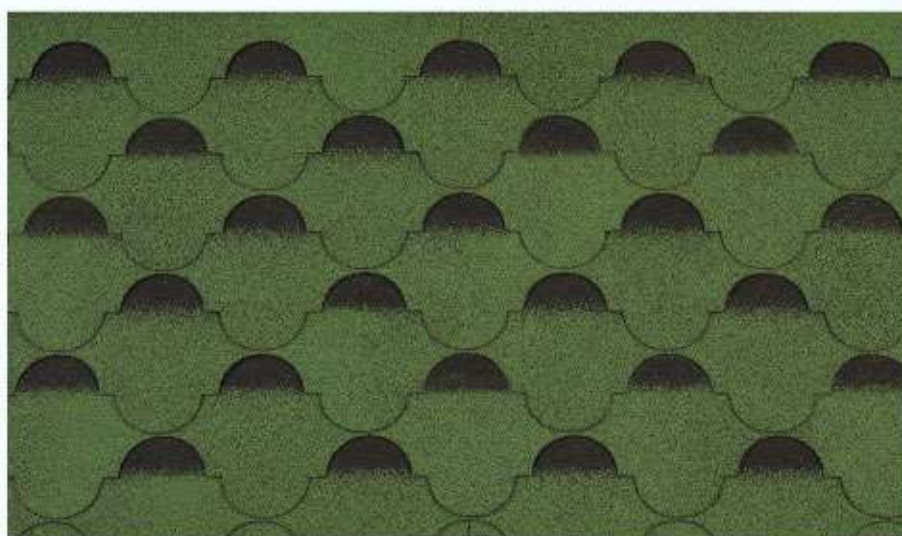
BTM Shingle Yakut layers

- 1- Natural, color granulated surface, protecting against external effects
- 2- Superior performance oxidized bitumen
- 3- High quality fiberglass reinforcement
- 4- Protective sand layer
- 5- Plastic film protecting the self-adhesive part

Natural colors in harmony with the environment



BTM Shingle Yakut



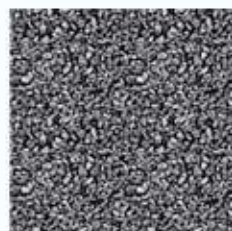
BTM Shingle Rustik



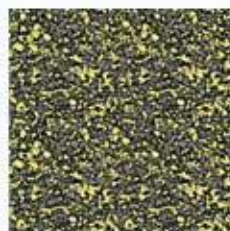
Red



Green



Grey



**** Grizzled Brown***



**** Grizzled Red***



**** Blue***

Please ask to see a product sample before making the final decision on your color and model selection. Screen view and catalog print images may differ from the actual product for technical reasons. For this reason, BTM cannot be held responsible for differences such as color, shade and texture.

**** Minimum order: 5.000m²***



BTM Shingle (Yonca - Yaprak - Petek)

Shingle was produced in Turkey for the first time by BTM in 1997. The Yonca, Yaprak and Petek models, which became a classic during the initial production period, were offered to the users and attracted great interest.

The Yonca, Yaprak and Petek models provide your roof with a different and colorful view, enabling you to have the house you have always dreamed of. One of these three models, now classics, is absolutely for you.



REVITALISING SOLUTIONS FOR BUILDINGS



BTM Shingle (Yonca - Yaprak - Petek);

*Lightweight roof covering sheets,
not causing extra load to your building.*

*Flexible by its nature, easy to use
in all roof details.*

*Resists rain, high wind and all climatic conditions
for many years.*

*Yearly maintenance is not required since
it is not broken nor carried away.*

*It is a strong roof covering material thanks to all
aforementioned features.*

btm shingle

CE Conforms European Norms



anatomic structure of quality



BTM Shingle Yonca layers

- 1- Natural, color granulated surface, protecting against external effects
- 2- Superior performance oxidized bitumen
- 3- High quality fiberglass reinforcement
- 4- Protective sand layer
- 5- Adhesive type



BTM Shingle Yaprak layers

- 1- Natural, color granulated surface, protecting against external effects
- 2- Superior performance oxidized bitumen
- 3- High quality fiberglass reinforcement
- 4- Protective sand layer
- 5- Adhesive type



BTM Shingle Petek layers

- 1- Natural, color granulated surface, protecting against external effects
- 2- Superior performance oxidized bitumen
- 3- High quality fiberglass reinforcement
- 4- Protective sand layer
- 5- Adhesive type

Natural colors in harmony with the environment



BTM Shingle Yonca Red



BTM Shingle Yonca Grey



BTM Shingle Yonca Green



BTM Shingle Yaprak Red



BTM Shingle Yaprak Grey



BTM Shingle Yaprak Green



BTM Shingle Petek Red



BTM Shingle Petek Grey



BTM Shingle Petek Green

Please ask to see a product sample before making the final decision on your color and model selection. Screen view and catalog print images may differ from the actual product for technical reasons. For this reason, BTM cannot be held responsible for differences such as color, shade and texture.



Red



Green



Grey



*** Grizzled Brown**



*** Grizzled Red**



*** Blue**

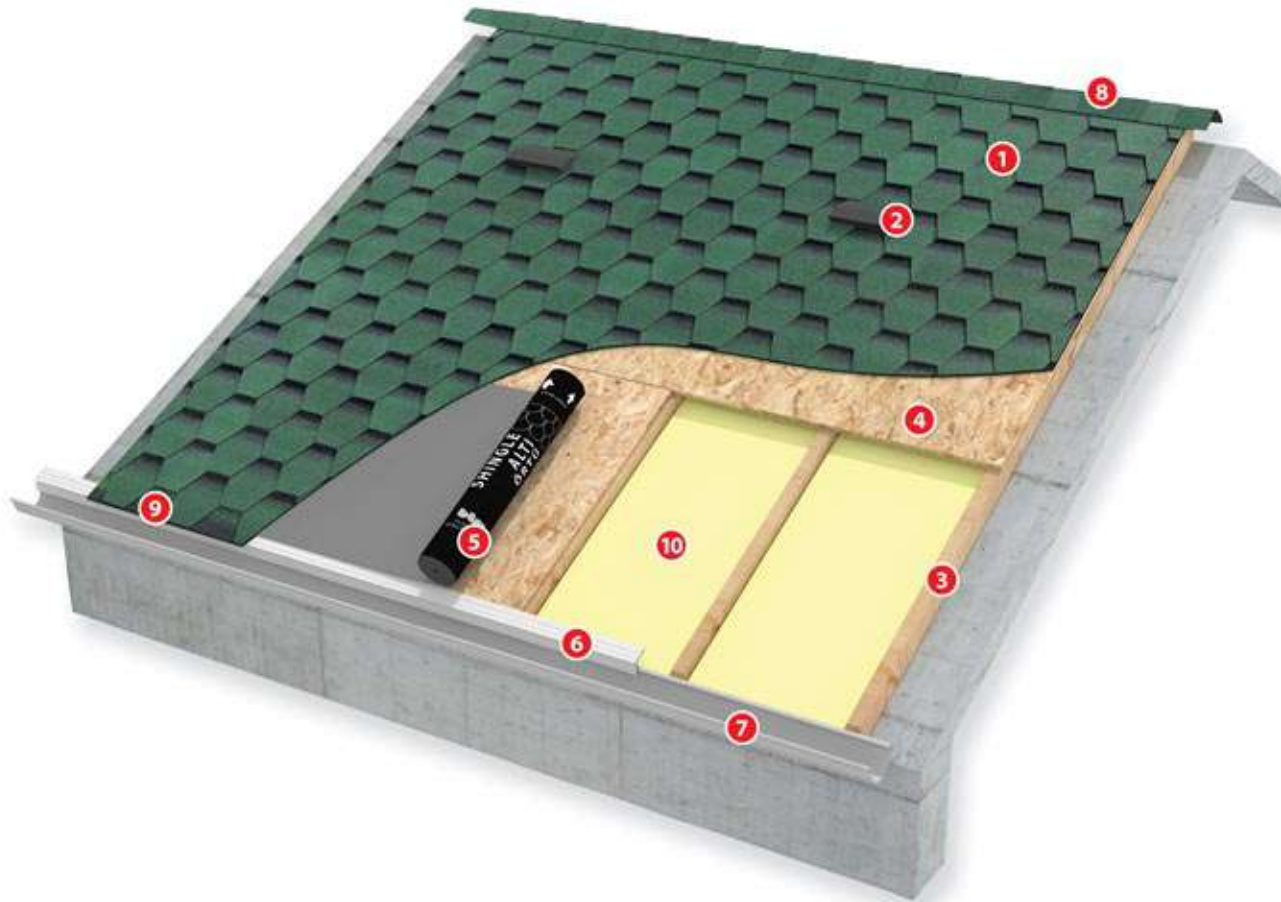
*** Minimum order: 5.000m²**

Shingle on Wooden and Inclined Reinforced Concrete Roofs



Wooden Roofs

- 1) BTM Shingle roof covering
- 2) Vent stack
- 3) Rafters and purlins
- 4) OSB or plywood
- 5) BTM Shingle underlayment membrane
- 6) Gutter profile
- 7) Gutter
- 8) Shingle ready-made ridge component
- 9) Shingle starting strip



Reinforced concrete roofs

- 1) BTM Shingle roof covering
- 2) Vent stack
- 3) Rafter
- 4) OSB or plywood
- 5) BTM Shingle underlayment membrane
- 6) Gutter profile
- 7) Gutter
- 8) Shingle ready-made ridge component
- 9) Shingle starting strip
- 10) BTM Polpan thermal insulation board
(Its application is strongly recommended in both types of roofs)

Details of a Long Life and Healthy Roof



Chimney flashing



Gutters



Parapet flashing



Vent stacks



Installations vent stack



When applying shingle on your roof, you will obtain the optimum gain when you use all system components. The vent stacks and insulation details should not be ignored.

A long life and healthy roof is achieved upon sensitive application of above mentioned details. A resistant roof creating no problem over the years can be obtained by a high quality shingle and high quality workmanship.



Large Headed Galvanized Shingle Nail



Shingle Ready-made Ridge Component



Shingle Starting Strip

* Before making your final decision please ask for a sample of the product.
BTM shall not be held responsible for the different understanding of the color, shape etc of the product which may be caused by catalogue printing technics.

* Please refer to www.btmpolpan.com.tr and www.btmshingle.com for details

btm Bituminous Waterproofing Materials Inc.

Head Office

Kemalpaşa Organize Sanayi Bölgesi Atatürk Mah. Gazi Bulvarı No:152 35170 Kemalpaşa - İZMİR - TÜRKİYE
Phone: +90(232) 877 04 02 (8 Lines) Fax: +90(232) 877 04 10

Export Department

Yeşilbağlar Mah. Başkent Cad. Kaptan Sokak Deval İşhanı No:21 K:3 D:4 34890 Pendik - İSTANBUL - TÜRKİYE
Phone: +90(216) 473 34 73 (pbx) Fax: +90(216) 488 84 00

www.btmpolpan.com.tr • info@btmpolpan.com.tr

*Please ask to see a product sample before making the final decision on your color and model selection. Screen view and catalog print images may differ from the actual product for technical reasons.
For this reason, BTM cannot be held responsible for differences such as color, shade and texture.*